

Automatic Washbasin Mixer SLU 41

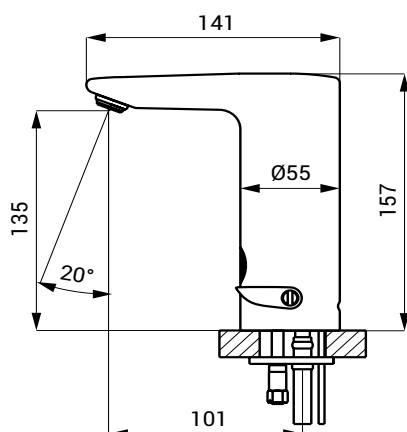


Characteristics



- economical aerator, rate of flow 6 l/min
- hygienic flush
- possibility of water temperature adjustment by mixer and follow-up plug by cover
- electromagnetic valve is in tap body
- is destined for cold and hot water, temperature is regulated by mixer
- water flowing as long as hands are in the active range
- water stops flowing after removal of hands from the active range sensor after adjustable time delay (can be set in range 0,25 – 7,75 s)
- function of automatic water stop after 5 minut of continuous flow
- monitoring of battery capacity(for models with index B)
- START/STOP program
- parameter adjustment using by the remote control SLD 03

Dimensions



Technical Specification

Operating voltage

- SLU 41 24 V DC
- SLU 41B 6 V

Power input

- operating by 24 V DC 2 W
- operating by 6 V 2 W

Battery life

- 4 pcs. AA alkaline batteries approx. 2 years (100 uses per day)
- AA, 1,5 V, 2700 mAh

Active range

- standard 0,13 - 0,19 m
- START/STOP program 0,05 - 0,15 m

Recommended flow pressure

- Rate of flow 0,1 - 0,6 MPa
- Water inlet 6 l/min. (inf. data)
- male thread G 1/2"

Supply Specification

- | | | |
|---------|--------------------|---|
| SLU 41 | - Supply No. 03410 | faucet with mixer, electronics and electromagnetic valve, connecting hoses, angle valve |
| SLU 41B | - Supply No. 03415 | with filter and check valve (2 pcs.), cover for temperature mixer, 4 pcs. AA alkaline batteries 1,5 V, 2700 mAh with battery case (SLU 41B) |

Recommended Accessories

- | | | |
|---------|-------------------|--|
| SLZ 01Y | - Supply No.05012 | power supply 24 V DC operating of max.10 pcs. washbasin taps |
| SLZ 01Z | - Supply No.05011 | power supply 24 V DC operating of max. 20 pcs. washbasin taps |
| SLZ 04Y | - Supply No.05041 | power supply 24 V DC for DIN rail, operating of max. 10 pcs. washbasin taps |
| SLZ 04Z | - Supply No.05042 | power supply 24 V DC for DIN rail, operating of max. 20 pcs. washbasin taps |
| SLZ 04X | - Supply No.10049 | power supply 24 V DC for DIN rail, operating of max. 30 pcs. washbasin taps |
| SLD 03 | - Supply No.07030 | remote control for an adjustment of parameters |
| SLA 36 | - Supply No.06360 | set of 4 pcs. alkaline batteries AA, 1,5 V, 2700 mAh (for models with index B) |